

Enquêtes environnementales réalisées par la Direction de la Santé Publique de Montréal

Yves Frenette
Hygiéniste de l'environnement







AIRIDEAL[®] 3

BIOMERIEUX

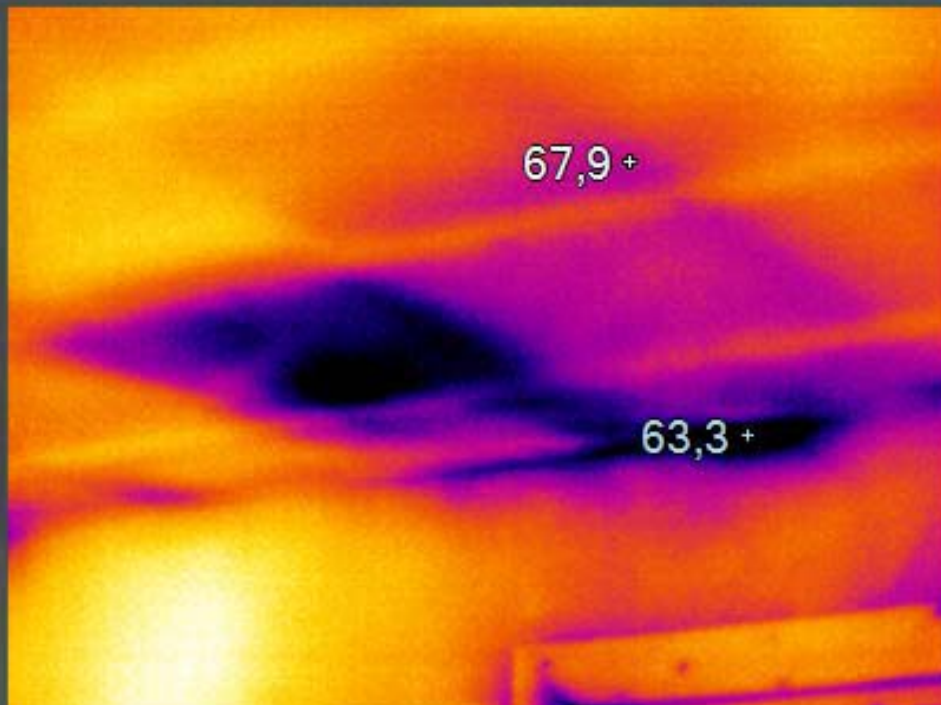




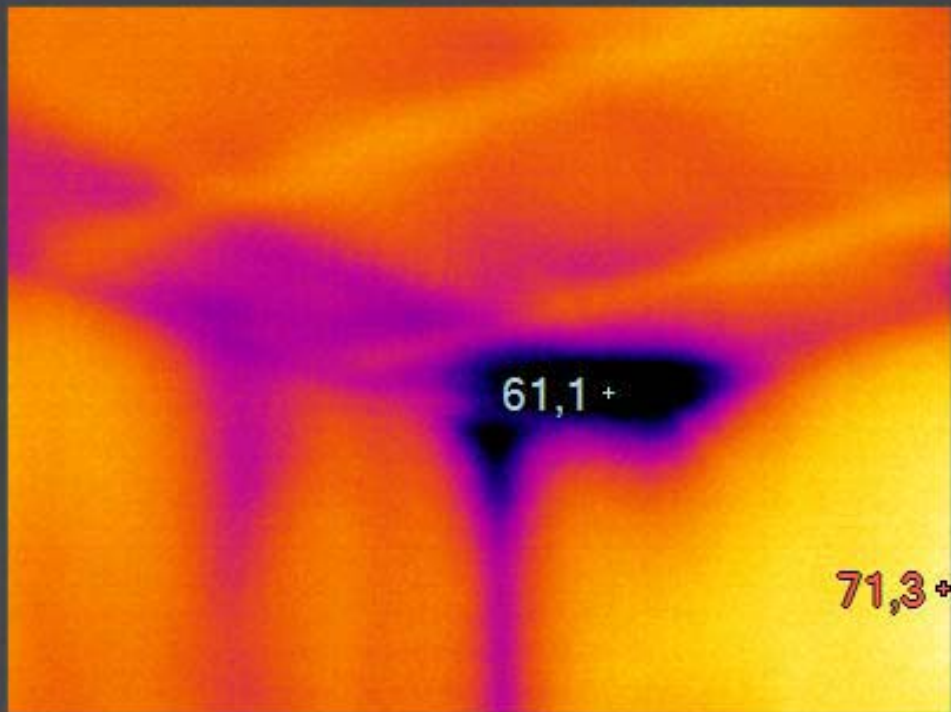




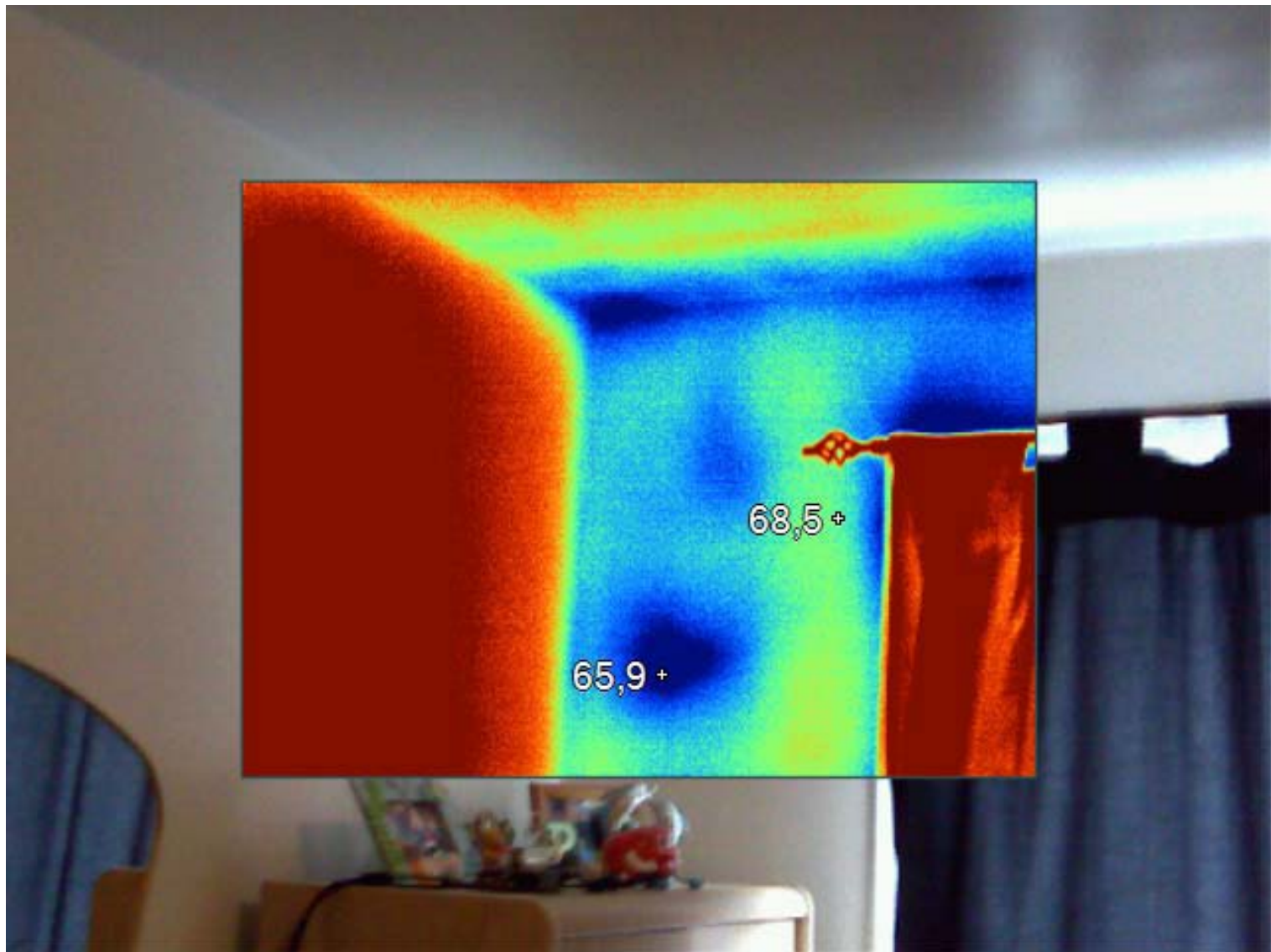




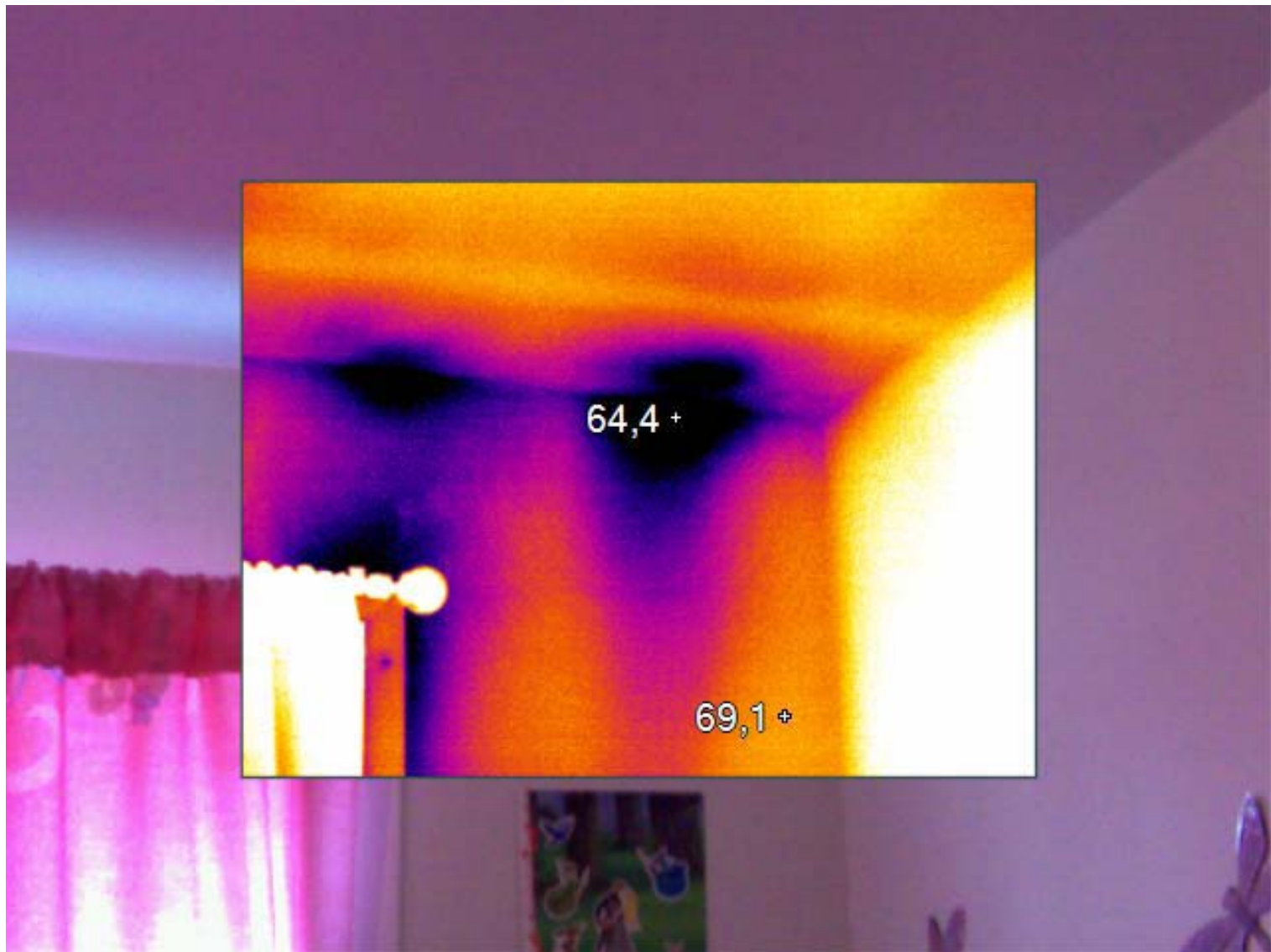












64,4 +

69,1 +



71,6+

65,5+



70,6+

64,5+

1. RÉSULTATS

Tableau II : Identification (genre, espèce) et dénombrement (UFC/m³) des moisissures prélevées dans l'air intérieur (260 litres), au 9335, boulevard Pie IX est à Montréal, le 17 mars

Emplacement Identification	Extérieur	Couloir rez-de- chaussée	Salon apt. 7	Cuisine apt. 7	Chambre enfant apt. 7	Couloir 2 ^{ème} étage	Salon Apt 9	Couloir 3 ^{ème} étage	Salon apt. 14
	Dénombrement UFC/m ³ (unité formatrice de colonie par mètre cube)								
<i>Cladosporium herbarum</i>	4					73		8	
<i>Cladosporium sphaerospermum</i>									4
<i>Mucor plumbeus</i>			85	88	92	19		19	
<i>Emericella spp.</i>									8*
<i>Penicillium chrysogenum</i>						12			8
<i>Penicillium glabrum</i>									4
<i>Penicillium brevicompactum</i>						8			
<i>Penicillium crustosum</i>							4	4	
<i>Penicillium spp.</i>						8	4	12	
<i>Phoma spp.</i>									8
<i>Chrysonilia sitophila</i>		4**							
<i>Rhizopus stolonifer</i>		4**							
<i>Isolats non sporulants blancs</i>	42								8
<i>Isolats non définis</i>									
<i>Levures</i>	8						4***		4
TOTAL	54	8	85	88	92	120	12	43	44

Deuxième cas





Call for more information
304-4639

2







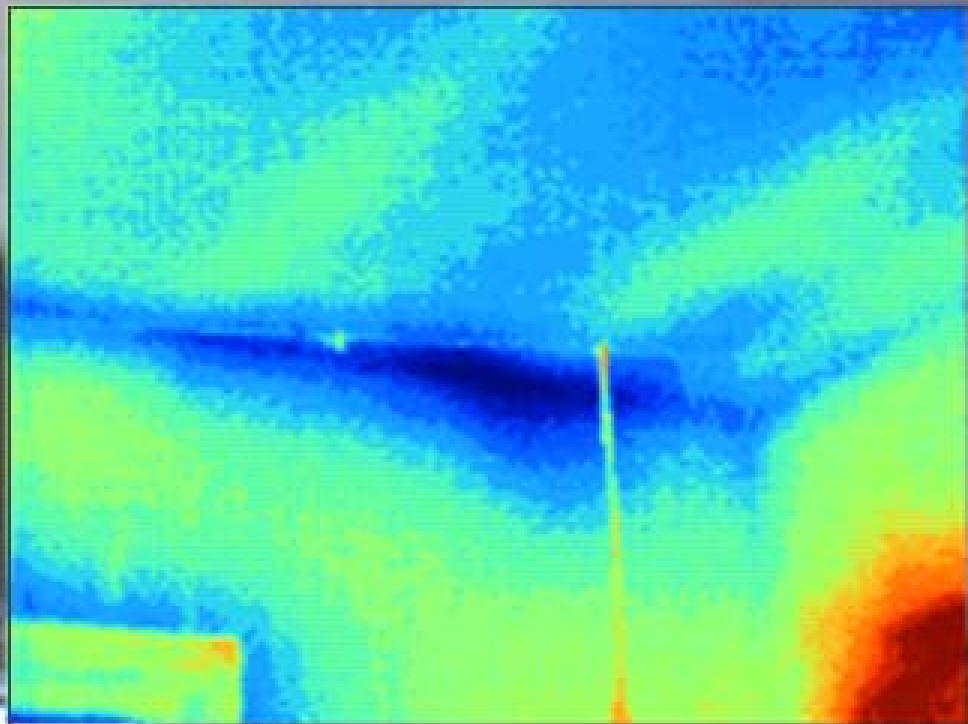


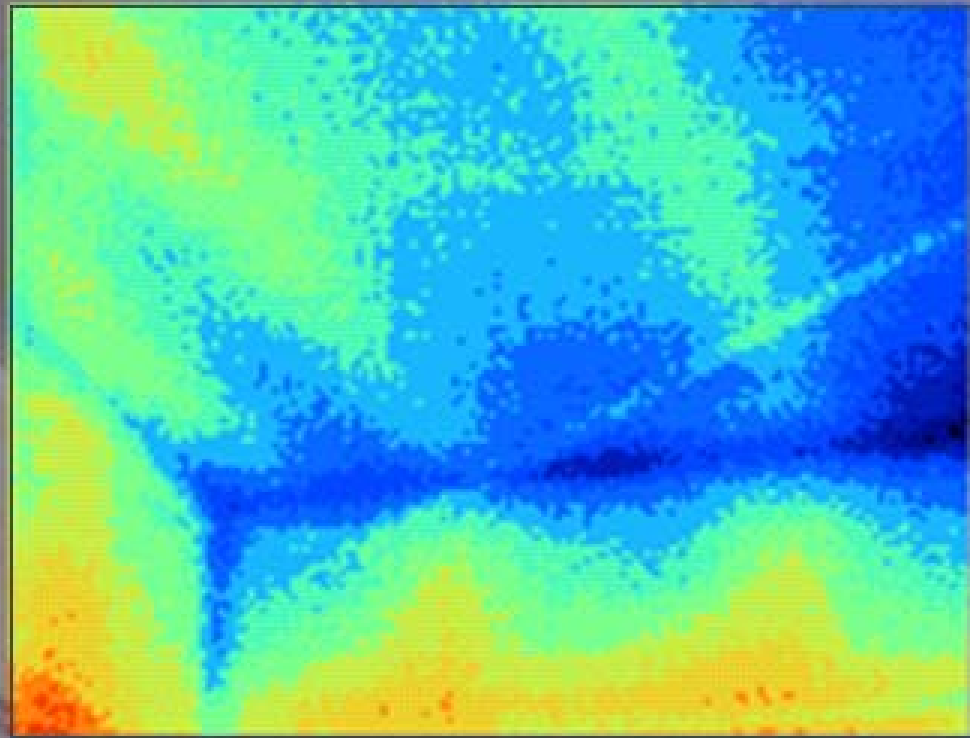


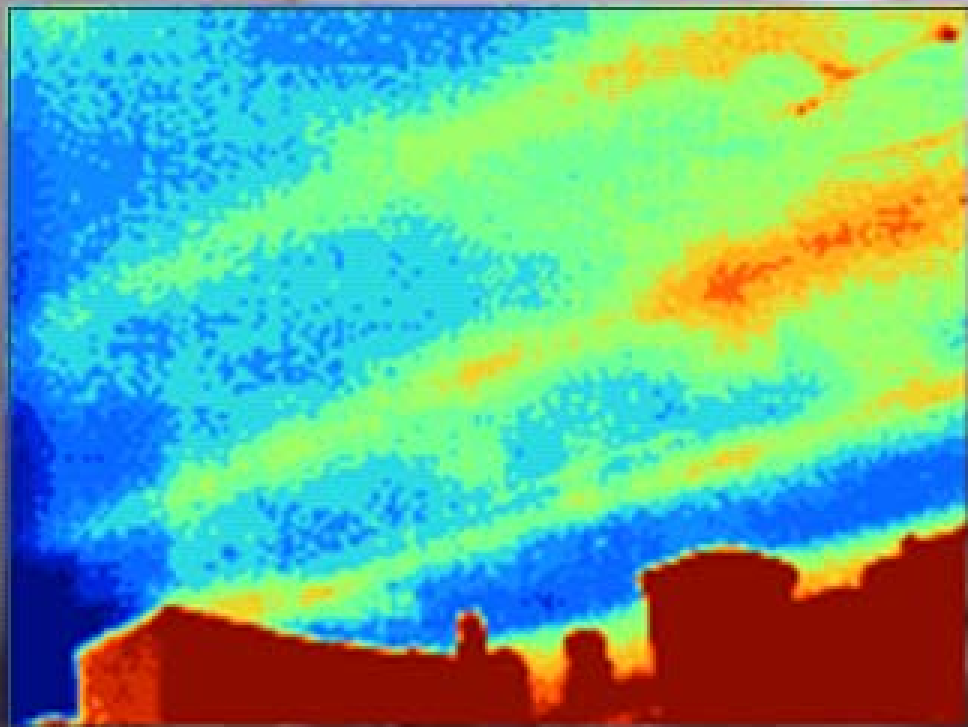
10

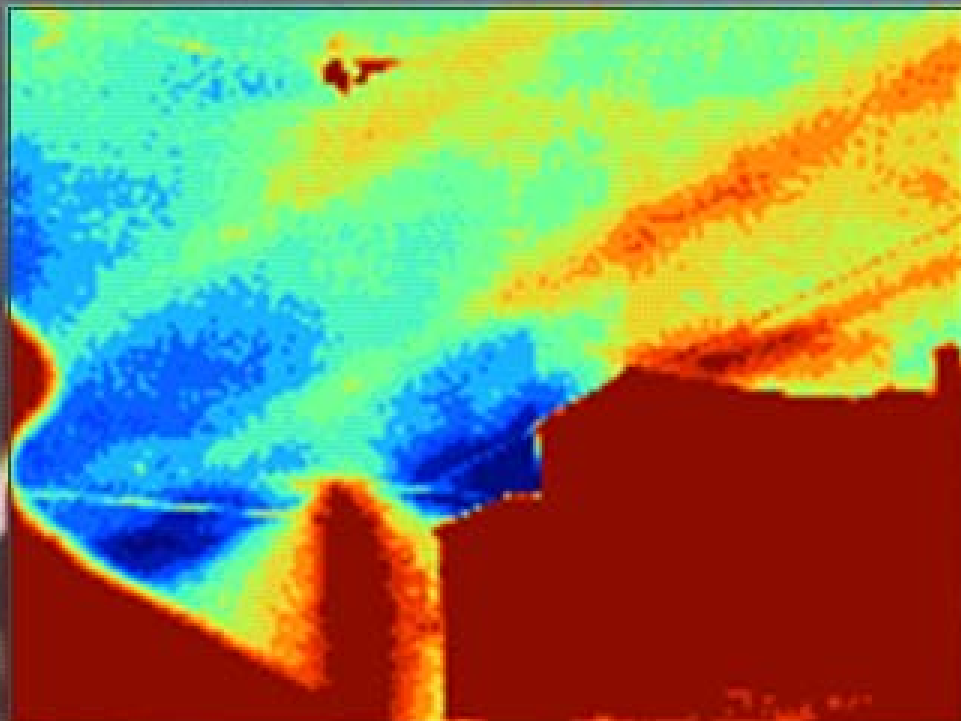


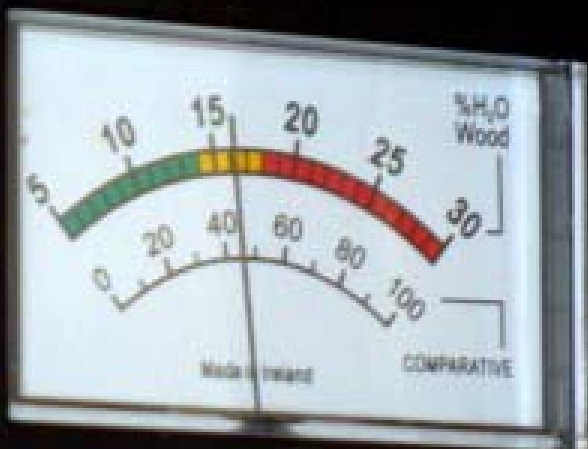










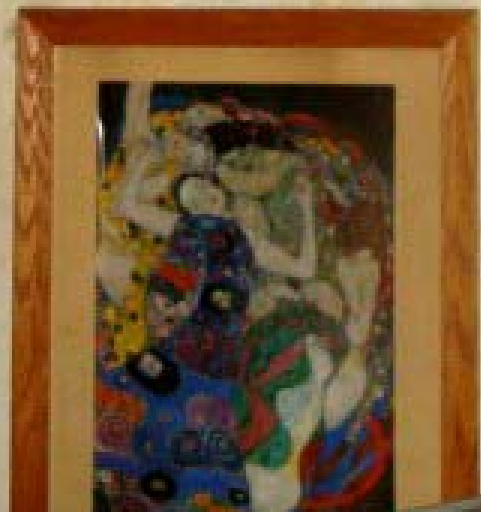
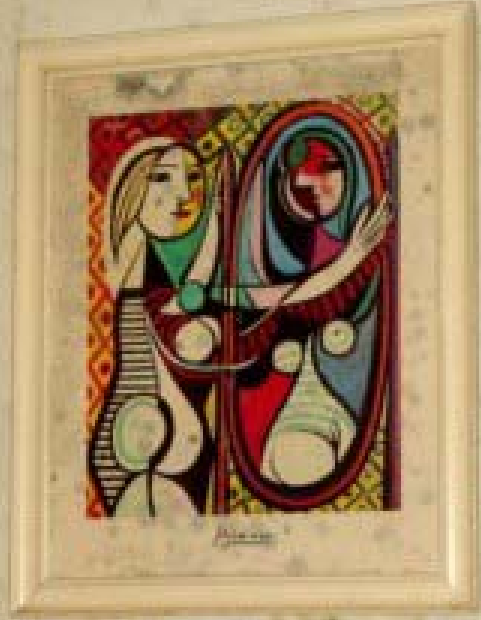


TRAMEX™

Moisture Encounter Plus

Scale 1. ● - Wood, Timber

Scale 2. ● - Drywall, Roof





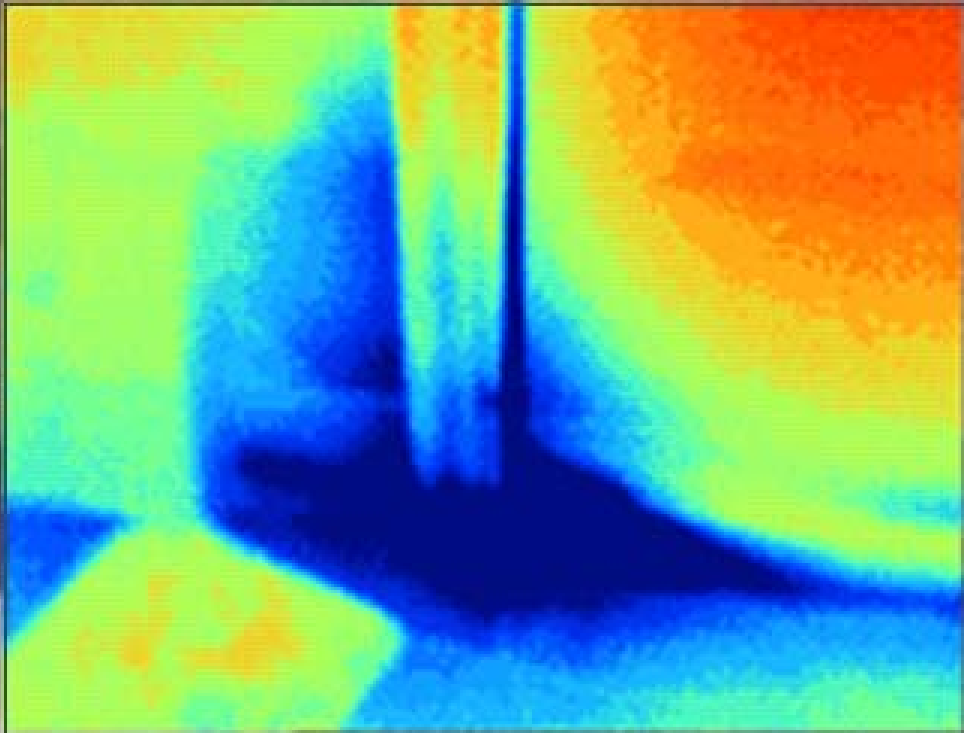




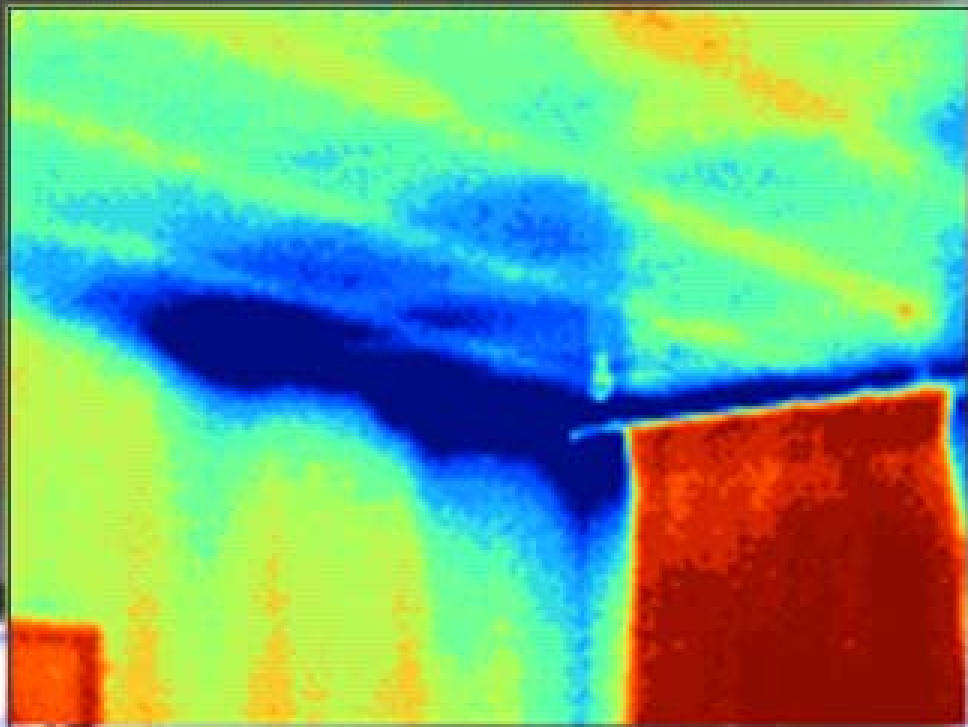












icm Moisture, Service & Maintenance
1-800-361-1042



TRAMEX™

Moisture Encounter Plus

- Scale 1. ● - Wood, Timber
- Scale 2. ● - Drywall, Roofing
- Scale 3. ● - Plaster, Brick

